

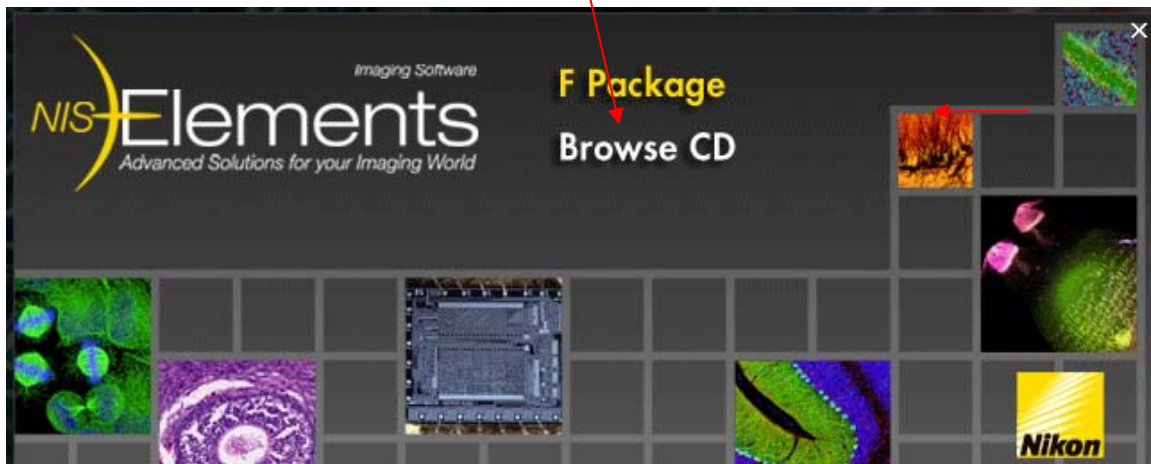


NUMBER: TB11-001
DATE: February 8, 2011

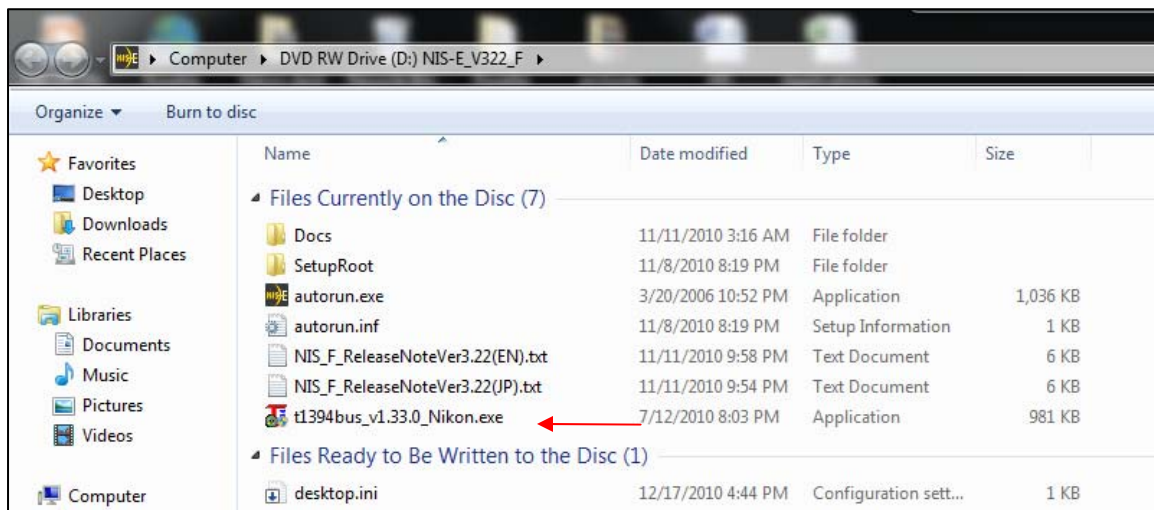
SUBJECT: Firewire Installation Instructions
for the DS-U3 Camera Controller

DIGITAL SIGHT DS-U3 FIREWIRE INSTALLATION INSTRUCTIONS

- Step 1:** Install the interface card in the computer and turn the computer on. Allow Windows to install the driver for the PCI-E card (do not plug our camera in during this step).
- Step 2:** An NIS-Elements CD-ROM comes with the DS-U3. Put it in the CD drive. Allow Autorun to start. Then select "Browse CD". If NIS-Elements is not installed on this computer, do not install it yet.



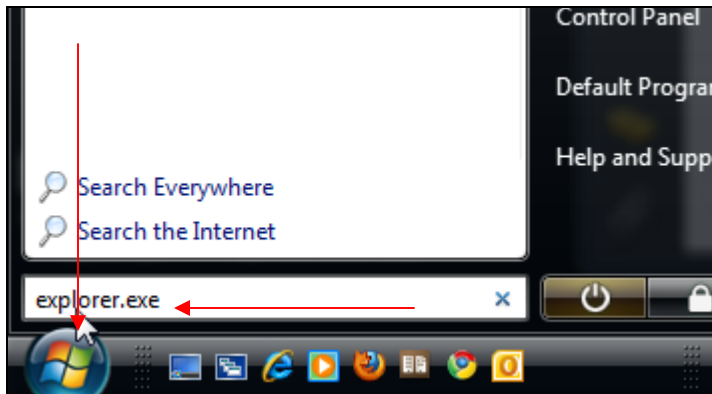
- Step 3:** Locate the "Theycon" driver, Double click on the file called "*t\1394bus_v1.33.0_Nikon.exe*"; allow it to extract to its default directory "*C:\Theycon*". *This DOES NOT install the driver in Windows. It is only on the hard drive for installation and configuration later on.*



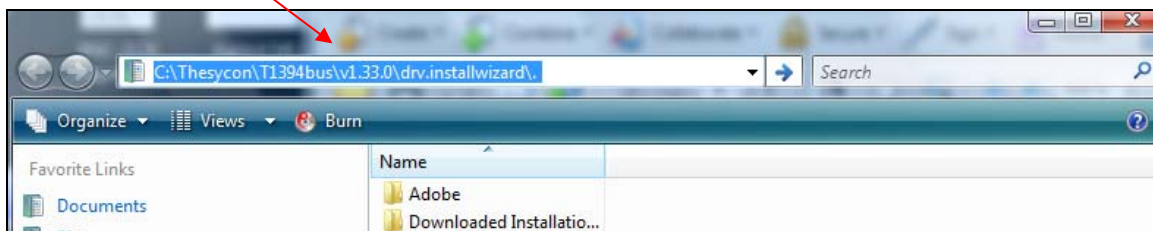
Step 4: Install NIS-Elements Version 3.22

Step 5: Plug your camera in to the FirewireB board.

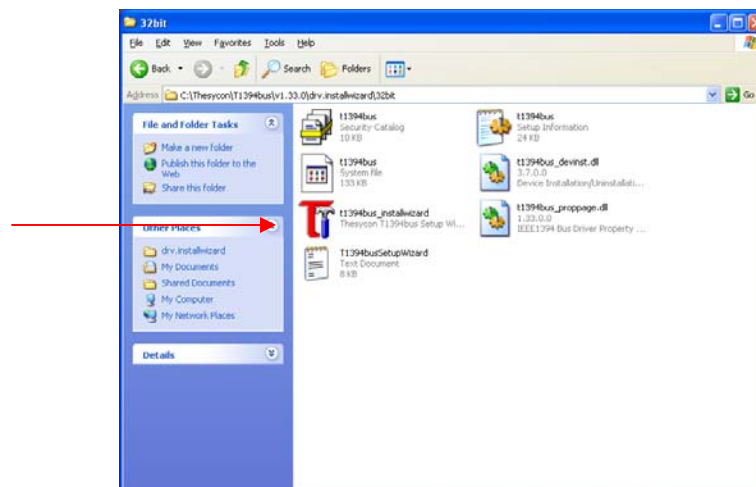
Step 6: Now you are ready to install the Firewire driver. To do this, you must navigate to the folder on the hard drive using Windows Explorer. To find Windows Explorer, go to the Windows Start menu, and type explorer.exe and hit ENTER” (or right-click on the Start menu click “Explore”).



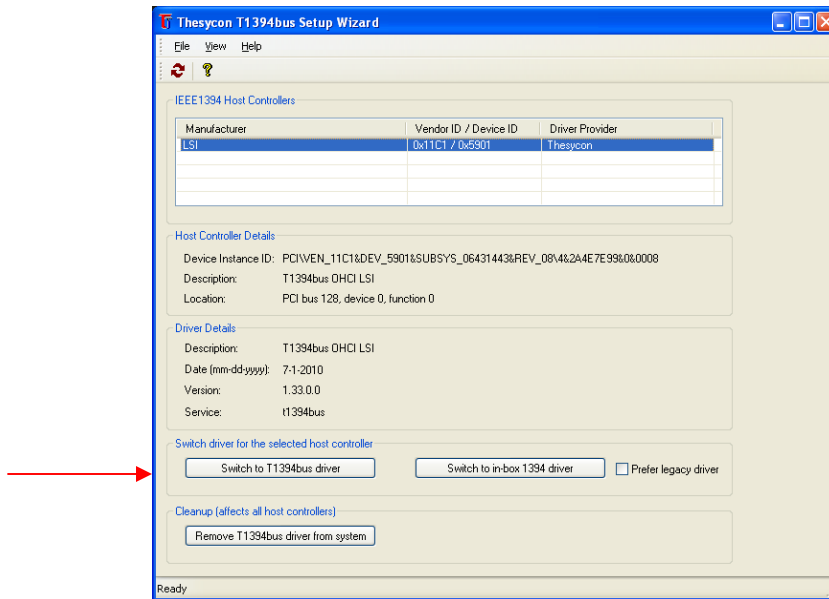
Step 7: Windows Explorer will open. Type the path *C:\Thesycon\T1394bus\v1.33.0\drv.installwizard\.* into the top bar and hit ENTER, or just navigate by clicking on folders to *C:\Thesycon\T1394bus\v1.33.0\drv.installwizard\.*



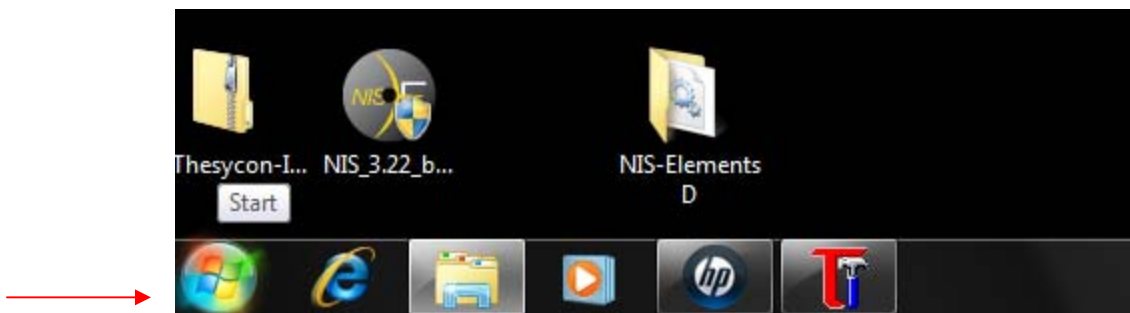
Step 8: Run the install wizard found in *C:\Thesycon\T1394bus\v1.33.0\drv.installwizard\.* Select 32bit if your PC is 32bit or Select 64bit if your system is 64bit. Run "t1394bus_install wizard.exe".



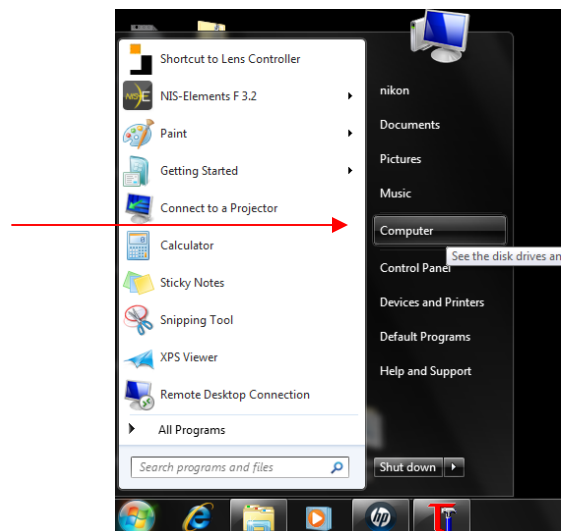
Step 9: Select the card in the Host Controllers selection box, then "Switch to T1394bus driver". Close the wizard. In the Windows Device Manager, it will be called "Generic 1394 Camera".



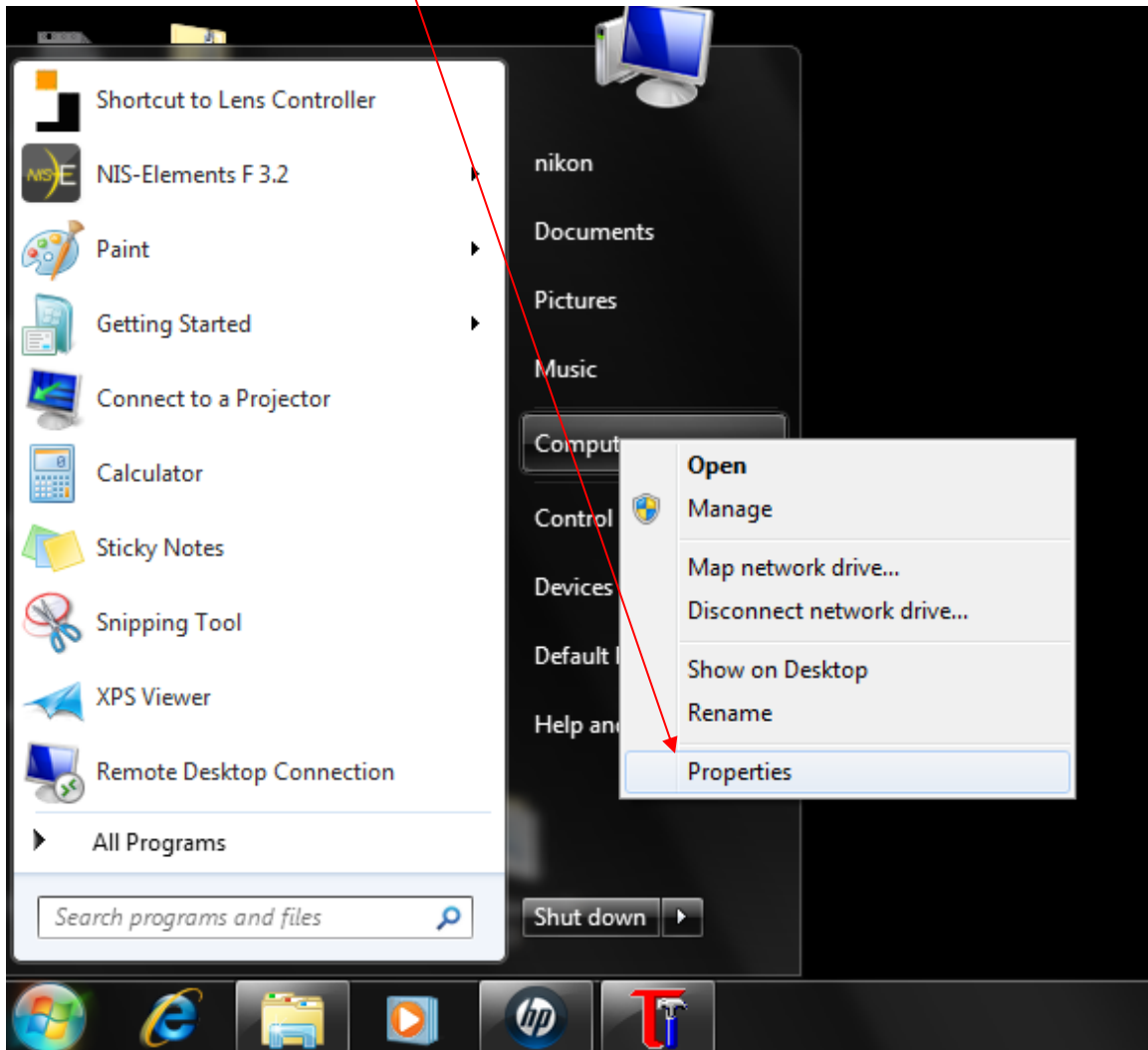
Step 10: Update the Windows level driver for the DS camera. To open Windows Device Manager, left-click on the Windows Start Menu located in the lower left corner of the desktop.



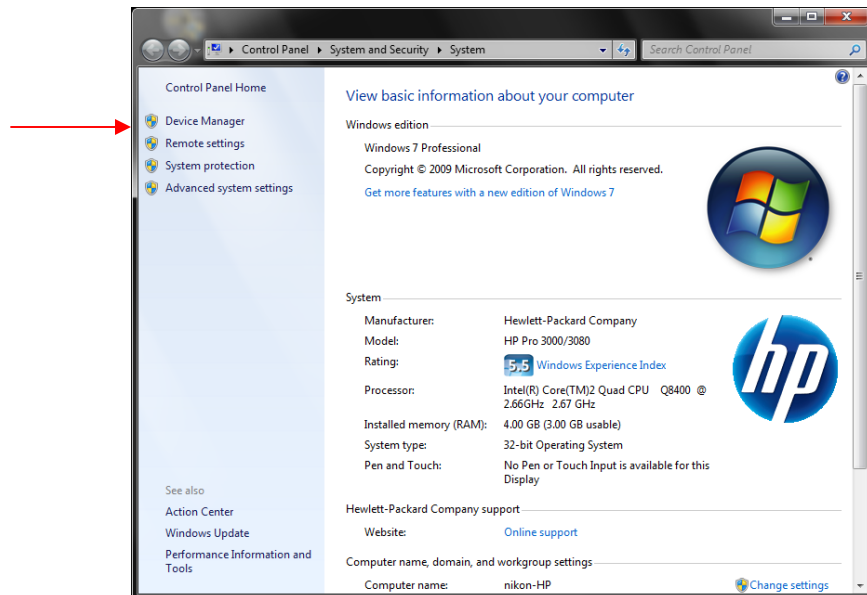
Step 11: Left-click on "Computer"



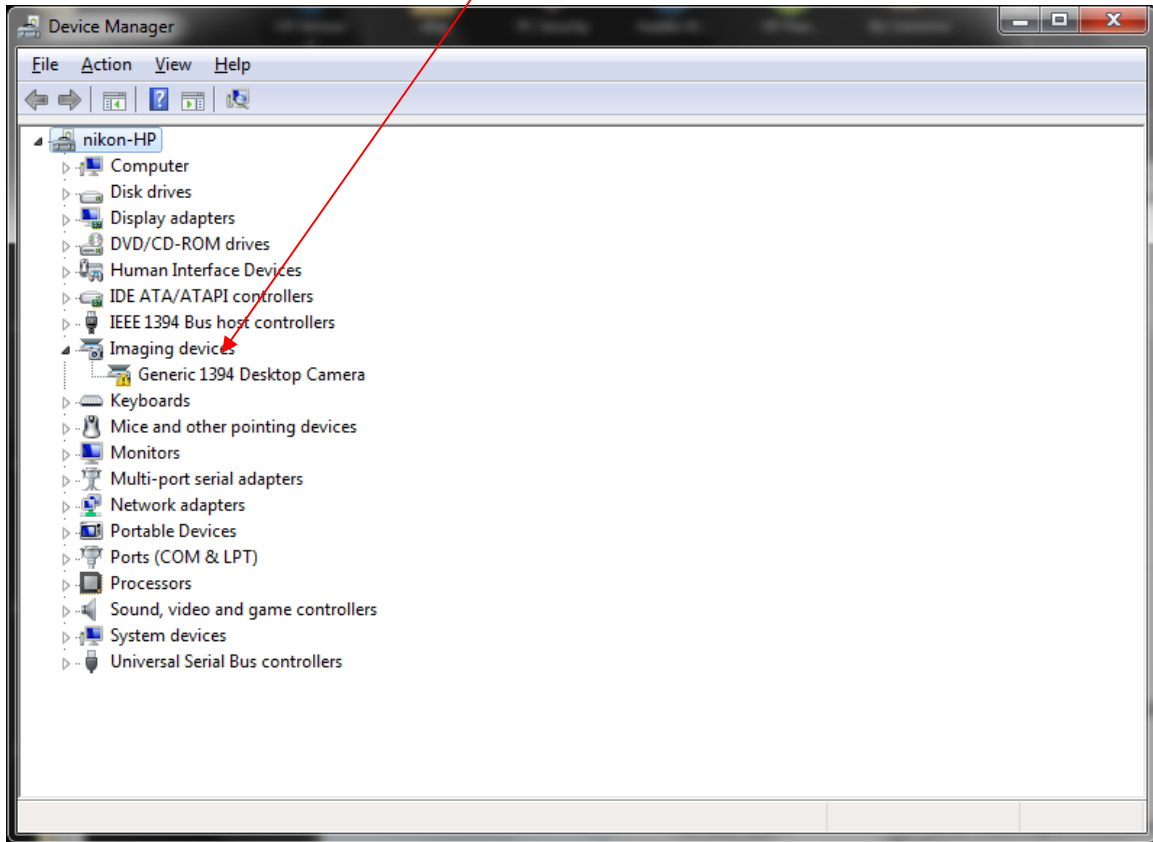
Step 12: Left-click on "Properties"



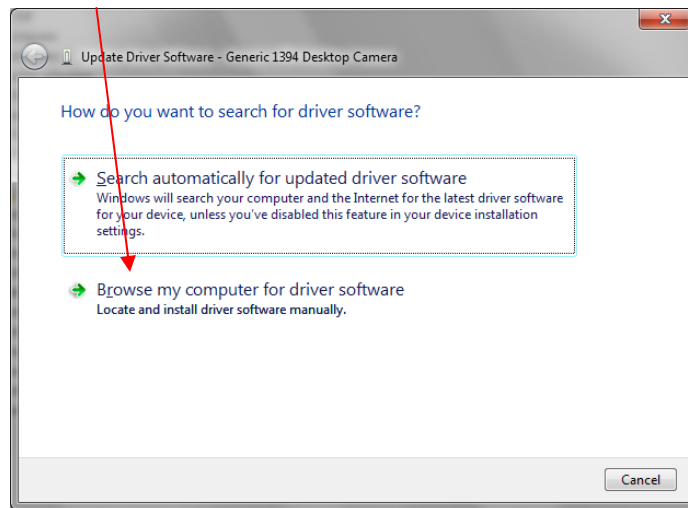
Step 13: Click on "Device Manger"



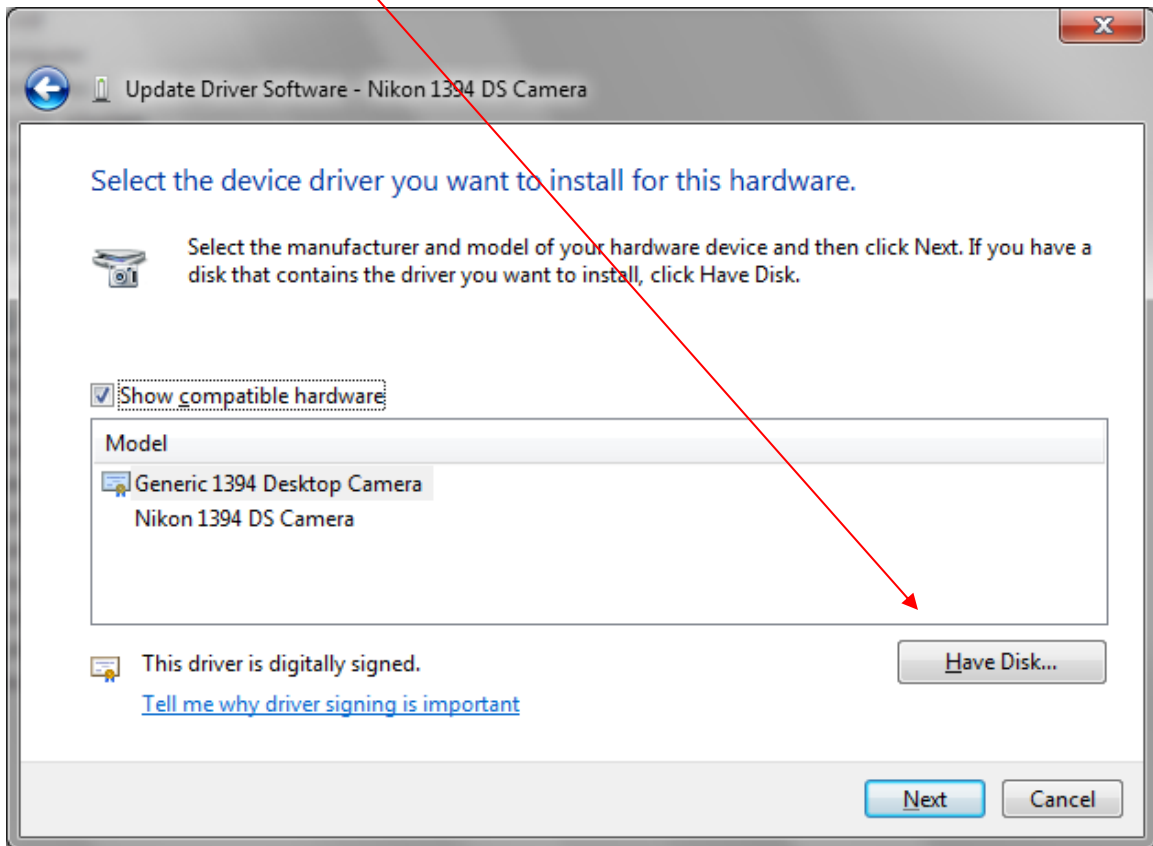
Step 14: Right click on the Generic 1394 Desktop Camera and select "Update the Imaging Device Generic driver "



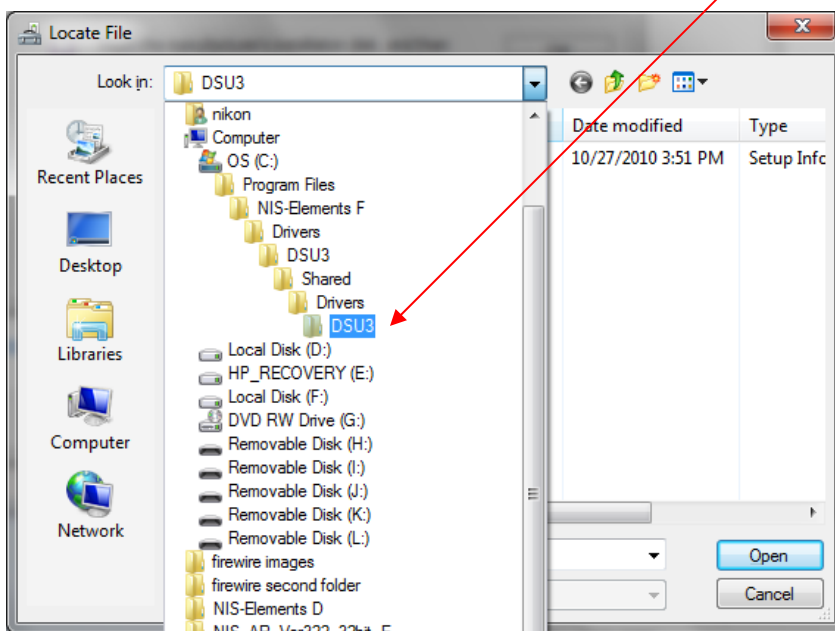
Step 15: Choose "Browse my computer for driver software"



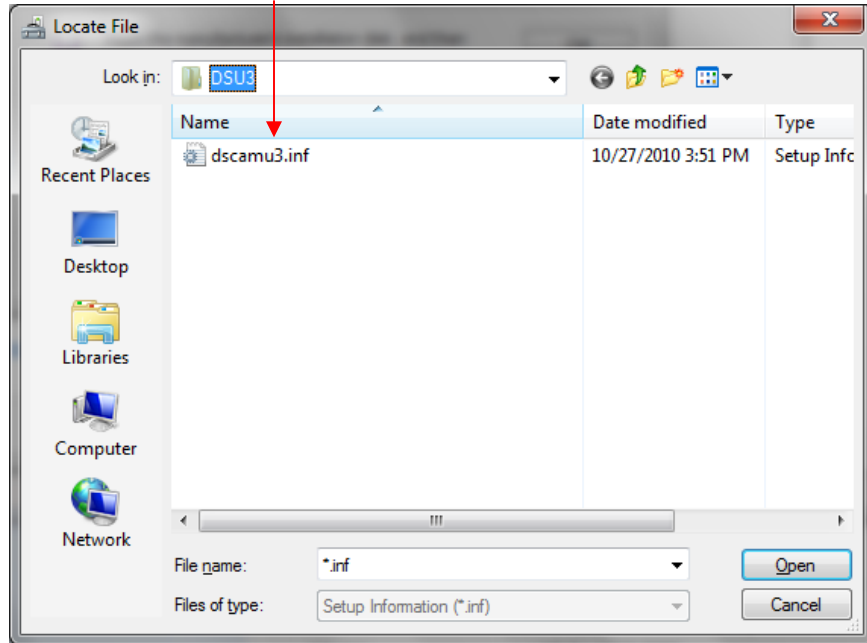
Step 16: Select "Have Disk"



Step 17: Browse to C:\Programfiles\NIS-Elements\Drivers\DSU3\Shared\Drivers\DSU3



Step 18: Choose "DSCAMU3.inf"



Step 19: Install NIS-Elements and select the DSU3 from the list

You have completed the installation!

Brian Jones
Imaging Integration & Technical Product Specialist
Nikon Instruments Inc.

TB11-001_Firewire 1394B Installation Instructions.doc